

**Ready...
Steady...
BBQ!**



**Thank you for signing up to host
A Brighter BBQ for Ormiston Families!**

All you need to do now is invite people to your BBQ, prepare some food, drink and entertainment and ask your guests for their donations to Ormiston Families!

This fundraising pack includes:

- Information on paying in your donations and where your money will go
- Fundraising ideas
- A Brighter BBQ poster to help advertise your BBQ

Paying in the pennies

There are a number of ways you can pay in the money you raise at your Brighter BBQ.

BACS

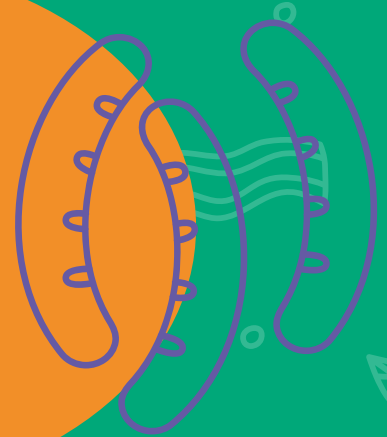
Account name: Ormiston Families

Sort code: 20-83-50

Account No: 10847445

Reference: BBQ – [your name]

e.g. BBQ – Jane Smith



Cheque

Please make cheques payable to 'Ormiston Families' and write your name and address on the back.

Please send cheques to **Ormiston Families, 333 Felixstowe Road, Ipswich, Suffolk, IP3 9BU**



Set up a JustGiving page

You can set up your own JustGiving page that you and your BBQ guests can donate to. Just scan this QR code or visit

www.justgiving.com/abrighterbbq



Fundraising ideas



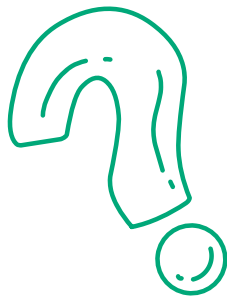
A grill-off!

Ask brave BBQers to make a donation to enter a friendly competition where judges decide who's the king or queen of the grill!



Pay by the plate

Make your funds via an entry fee to your BBQ, charging by the plate or by selling homemade sauces or desserts!



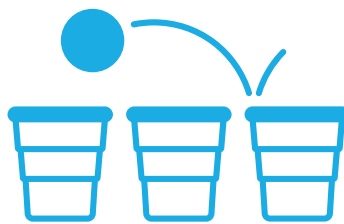
Host a quiz!

Host a mid-meal general knowledge quiz or ask guests to donate to play a round of Bingo!



Sports day!

Host a mini sports day with a tug-of-war, egg & spoon race or obstacle course!



Beer pong!

Use soft drinks to cater for everyone - under some cups, ask players to make a 50p/£1/£2 donation!



How your Brighter BBQ can help create brighter futures

Ormiston Families works across the East of England to take early and preventative action to create safe, healthy and resilient families who feel in control of their own wellbeing.



We work with families affected by offending, helping them to maintain positive relationships with a loved one in prison and offering children specialist support if they're struggling to cope.

We also provide early support for children and young people experiencing mental health problems and specialist bereavement counselling for children affected by the death of a loved one.



£10 could fund a support call to an isolated parent
£40 could fund a face-to-face support session
£100 could fund a practitioner for a day



I'm hosting A Brighter BBQ to raise money for Ormiston Families!



Date:

Time:

Location:

Contact Info:

